



## Installation Instructions

Perma Shine Polished Stainless and Black Powder Coated Bumpers

Part # 8448/7648 Rear Double Tube Receiver Hitch Bumper for 1987 - 2006 Jeep Wranglers.  
Note: Will fit 1976 - 1986 Jeep CJ vehicles with modification (drilling required)

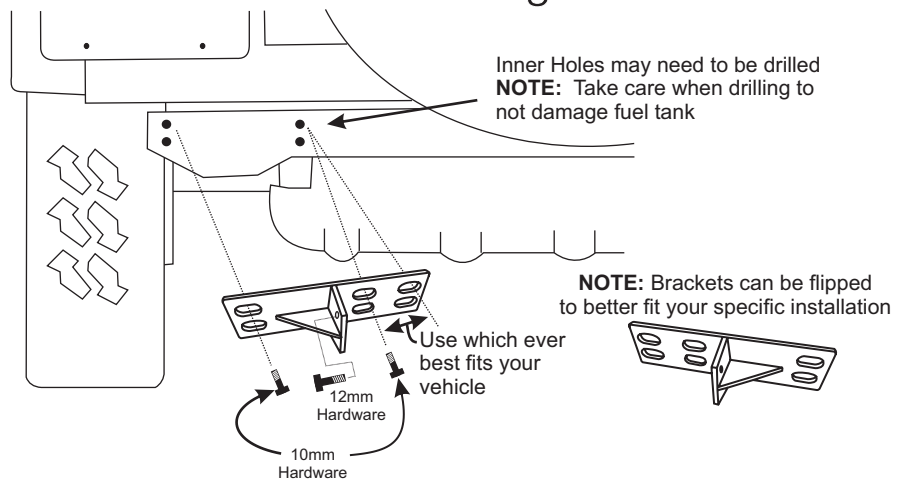
**NOTE: This bumper is NOT RATED FOR TOWING.**  
\*\*\*Please follow instructions for ease of installation and correct fit.\*\*\*

### PARTS LIST:

- 1 - Bumper
- 2 - Rear Mount Brackets L & R
- 8 - 10mm Bolts
- 8 - 10mm Nuts
- 16 - 10mm Flat Washers
- 8 - 10mm Lock Washers
- 4 - 12mm Bolts
- 4 - 12mm Nuts
- 4 - 12mm Flat Washers
- 4 - 12mm Lock Washers

Driver Side Shown

Figure A



### Installation:

1) Remove factory rear bumper and brackets.

2) Locate left and right rear bumper brackets. Place left bracket with large vertical tab facing toward the inside of the vehicle, and the flat surface facing outward. Repeat for opposite side. See Figure A. On 87-95 Wranglers the holes in the frame will line up. On 97-06 Wranglers the outer holes will be located in the bumper mount frame, the inner holes will need to be drilled. On 76-86 CJ Jeeps, typically, most holes will need to be drilled. **Warning, drill very carefully through the bumper mount frame as the fuel tank is located directly behind the bumper mount frame.** Attach brackets with 4 - 10mm bolts, flat washers, lock washers and nuts supplied for each bracket. Repeat on opposite side. Leave hardware loose.

3) Locate the rear bumper onto the mounting brackets and attach through the top and bottom of the brackets with 4 - 12mm bolts, flat washers, lock washers and nuts supplied. Leave hardware loose.

4) Adjust brackets and bumper to be centered on the Jeep. Tighten all hardware to 45lbs torque.

**NOTE:** This bumper is **NOT RATED FOR TOWING**. The hitch is for accessory racks only. Take care not to overload any racks or damage to the bumper can result. Do not exceed 50lbs directly at the accessory hitch. Items on a rack that is extended out from the hitch will create leverage. 50lbs on a rack and 50lbs directly at the hitch are drastically different.

