



## **PART#: 86741 Installation Instructions**

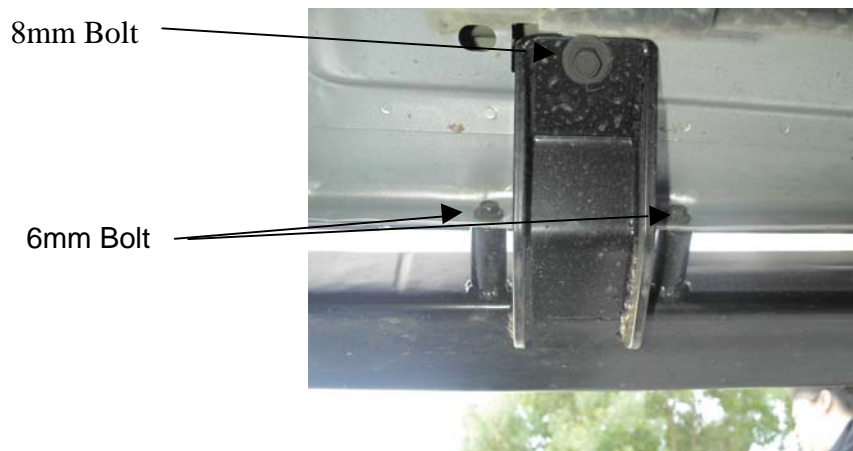
### **Rampage Recovery Rocker Guards for Jeep Wrangler 4-door 2007+**

#### **PARTS LIST**

- 2 – Rocker Guards, Driver-Passenger
- 6 – 8mm x 30mm bolts
- 12 – 6mm x 25mm bolts
- 6 – Large washers
- 12 – Small washers
- 4 - 8mm Pinch nuts

#### **PROCEDURE:**

1. **REMOVE CONTENTS FROM BOX. VERIFY ALL PARTS ARE PRESENT. READ INSTRUCTIONS CAREFULLY.**
2. Find a helper to hold the guards in place on the vehicle during the installation.
3. Place a rocker guard on the side of the vehicle and install the 8mm bolts with the large washer through the mounting brackets into the floor of the vehicle. Leave them loose for now to allow adjustment for the rest of the install. NOTE: Use 8mm pinch nuts if not factory installed.
4. Install the 5mm bolts with a flat washer through the pinch weld of the body into the stand offs on the sidebars. Again, leave them loose as you go until all are in place.
5. Tighten all bolts and repeat for other side.



For Technical Support, please call (951) 277-4949

This product is guaranteed to be free of defects in materials and workmanship for a period of 12 months  
Rampage Products 9225 Stellar Ct. #C, Corona Ca., 92883

Made In China