



Installation Instructions

PART#: 14300

Bracket Installation - Compatible with Streamline,
Xtremeline and Patriot Running Boards.

2007- 14 JEEP WRANGLER Unlimited 4 DOOR

Parts List

2- Front Brackets Black	6- 5/16 –18 x 3/4" Carriage Bolts
2- Middle Brackets Black (longest)	18- 5/16-18 x 3/4" HH Bolts
2- Rear Brackets Black (shortest)	30- 5/16-18 Nylok nuts
6- PinchWeld Plates Black	30- 5/16 Flat Washers
6- "C" Channel clamps	4- 1/2 x 1-3/4 Stud Plates
1- Set of end caps	6- M8 x 20 HH Bolts
6- M8 x 20 Lock Washer	

Installation:

1) Front Brackets

- Locate two identical brackets marked "F". The bracket will position on the vehicle with the three slots facing out from the rocker panel. Begin on the drivers side and position the pinch weld plate on the bracket using one, 5/16-18 x 3/4" HH bolt, 5/16 flat washer and 5/16-18 Nylock Nut. See Fig 3.
- Place the bracket up to the two pre drilled holes in the pinch weld and attach with two 5/16-18 x 3/4" HH bolt, 5/16 flat washer and 5/16-18 Nylock Nuts. Hand tighten.
- Locate 1/2 x 1-3/4" Stud Plates. On the underside frame rail of the vehicle you will find a Square hole and a smaller 5/16" hole next to it. Place the stud plate up through the square hole and drop the stud down through the 5/16" hole and through the slot on the bracket. Hold the tab flat in place and attached a 5/16" flat washer and 5/16" Nylock nut See Fig 1. Hand tighten.

For 2012+ models, there are pre-threaded holes in the under side of the floor board. They are covered by black piece of tape. (Figure 2) Attach the Front Driver Side Mounting Bracket to the under side panel using the included (1) 8mm x 35mm hex head bolt (1) 8mm lock washer and (1) 8mm flat washer.

Do not tighten at this time.

- Repeat for Passenger side

2) Middle Brackets

- Locate two identical brackets marked "M". These brackets are the longest of the set.
- Repeat steps A, B and C from Front bracket mounting instructions.
- Repeat for passenger side

3) Rear Brackets

- Locate two identical brackets marked "R". These brackets are the shortest of the set.
- Repeat steps A through B from Front bracket mounting instructions.
- Locate (1) 8mm x 35mm hex head bolt (1) 8mm lock washer and (1) 8mm flat washer, bolt the bracket assembly to the frame rail using the pre-threaded hole in the frame rail. Hand tighten.
- Repeat for passenger side

4) Streamline Boards

- Your new Boards are now ready to attach to the vehicle. Open the package carefully remove the two SS or Black bars. The 14300 hardware kit includes four end caps and eight X-mas tree fasteners. Locate two end caps labeled "L" and "R" position them on the Drivers side bar so the holes in the board and the cap line up. To determine Drivers and Passenger bars, the large step pad goes toward the front of the vehicle. (See Figure 2). Insert the fasteners through the holes and press into place. Repeat for Passenger side bar. The boards also come with four large plastic end caps for other applications which do not apply, these can be recycled or discarded.
- Place the boards on the brackets and install the "C" channel clamp with 5/16"-18x 3/4" carriage bolts on each of the brackets. Rotate the top clamp so it is parallel with the mounting bracket, this will squeeze the board between the lower bracket and top clamp. Repeat for all brackets.
- Finish tightening all bolts on the vehicle and boards, repeat steps A & B for Passenger side.

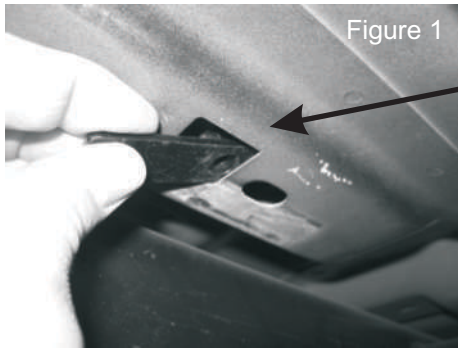


Figure 1

Bolt Plate for front and middle bracket locations on 2007 - 2011 Wranglers

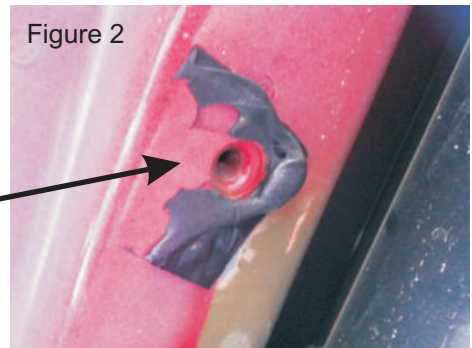


Figure 2

Pre-threaded hole on rear bracket location on 2007 - 2011 Wranglers and all bracket locations on 2012+ Wranglers.



Figure 3



Rampage Products Corona, CA
Phone: (951) 277-4949 Fax: (951) 277-2295
www.rampageproducts.com
Made in China