



INSTALLATION INSTRUCTIONS

Perma Shine Polished Stainless Tube Steps with Pads

Part No. 202, 242, 2026 & 2426

Ford 250/350 Super Duty Crew Cab 4Dr 1999-

Parts List:

To attach Mounting Brackets to the Truck:

4-Identical Mounting Brackets
22-10mm Flat Washers

1 4-10mm Body Bolts
8-10mm Nuts

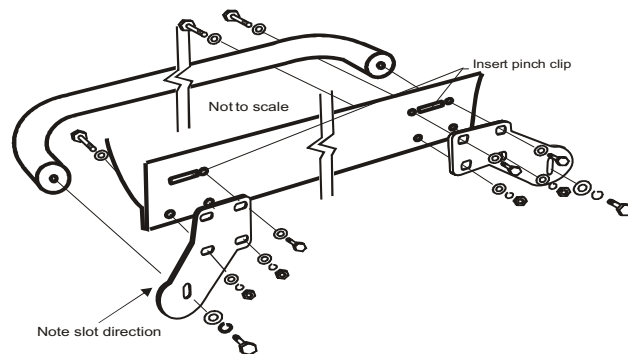
14-10mm Lock Washers
6-10mm Threaded Pinch Clips

To attach Tube Steps to the Mounting Brackets:

2- Tube Steps 4-12mm Bar Bolts 4-12mm Lock Washers 4-12mm Flat Washers

Installation:

1. Split parts into two equal allotments. One group for passenger side and one for driver side. They will be identical.
2. Locate factory pre-drilled locations on the underside of the body above pinch weld. In some cases, the holes and slots may be covered with tape or have rubber plugs that will need to be removed. Note the foremost and rearmost mounting locations. The rear most will have 2 holes and a horizontal slot in a symmetrical pattern on the inside body panel located directly above two predrilled holes in the pinch weld. The foremost will have one hole and one horizontal slot and an asymmetric vertical slot. See illustration.
3. Locate factory predrilled holes and horizontal slots above pinch weld mounting locations and insert one 10mm pinch clip in foremost slot and slide over factory predrilled round hole. Now insert two 10mm pinch clips in the rearmost slot and slide over two rearmost factory predrilled holes.
3. Mount front and rear mounting brackets to pinch weld holes as shown in illustration (with the bar mounting holes at the furthest distance from each other) with 10mm body bolts, (2) 10mm flat washers (one on inside and one on outside); and 10mm lock washers against 10mm nuts. Hand tighten only.
4. Insert remaining 10 mm bolts and washers into uppermost vertical slots on mounting brackets into the pinch clips previously installed in step 2. Hand tighten only.
5. Install Tube Steps into mounting brackets using 12 mm bolts and 12 mm flat washers provided with 12 mm lock washer against bolt head. Hand tighten only.
6. After insuring that all parts are properly aligned and tube is level, tighten all bolts. Recommended torque for 12mm bolts is 65ft-lbs, 10mm bolts is 30ft-lbs, 8mm bolts to 30ft-lbs and retighten factory body mount bolts to 45ft-lbs.
7. Repeat steps 1 through 6 for opposite side of vehicle to complete the installation.



Please Note:

Some hardware kits include extra parts that may not be used in your installation. Follow the instructions carefully and ensure you use all the necessary components, if there are spare parts please disregard them