



**Installation Instructions**  
Part number 999XX, Factory Replacement Soft Top  
for  
Jeep® Wrangler 07-09 2 door

**NOTE:** Installation of the top in warm weather is optimal for ease of installation. Ideal installation temperature should not be less than 70° (21C). Initial installation is the most difficult as the fabric has not been stretched. The top will loosen slightly with use and warm temperature. Allow about at least an hour for the initial installation.

\*\*\*Please follow instructions for ease of installation and correct fit.\*\*\*

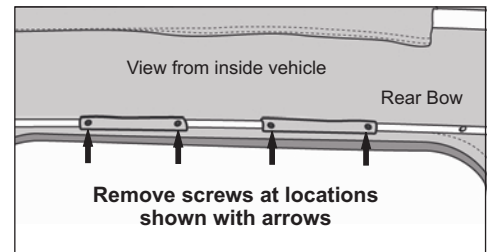
**Included:**  
Main Skin  
Right quarter window

Left quarter window  
Rear window

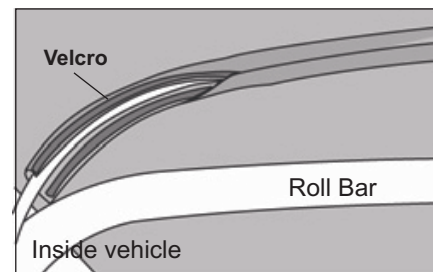
**STEP 1: Remove OEM top from vehicle**

- 1) Remove the rear window and side windows from the vehicle.
- 2) Unlatch front windshield latches.
- 3) Remove the plastic strips from the channel over the doors.
- 4) Unhook the rear corners from the belt channel.

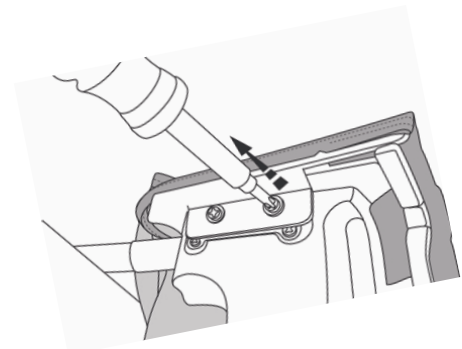
- 5) Use a philips head screw driver to remove the screws holding the top to the middle and rear bow as



- 6) Unfasten the Velcro strap from the center bow of the frame as shown.



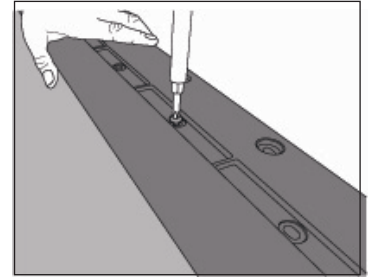
- 7) Fold top back down on vehicle with bow assembly laying so the side screws used to hold the plastic top fasteners are visible. Now remove screws. Do this on both sides.



- 8) Remove fabric from header by folding the bow assembly back into place on the windshield and latching the header back in place. Fold the top material onto the front of the vehicle with the backing side up. This will expose the 19 screws on the top of the header. Now use a Philips head screw driver to remove the screws as shown.

**NOTE: Be sure to keep the screws for re-installation of the top.**

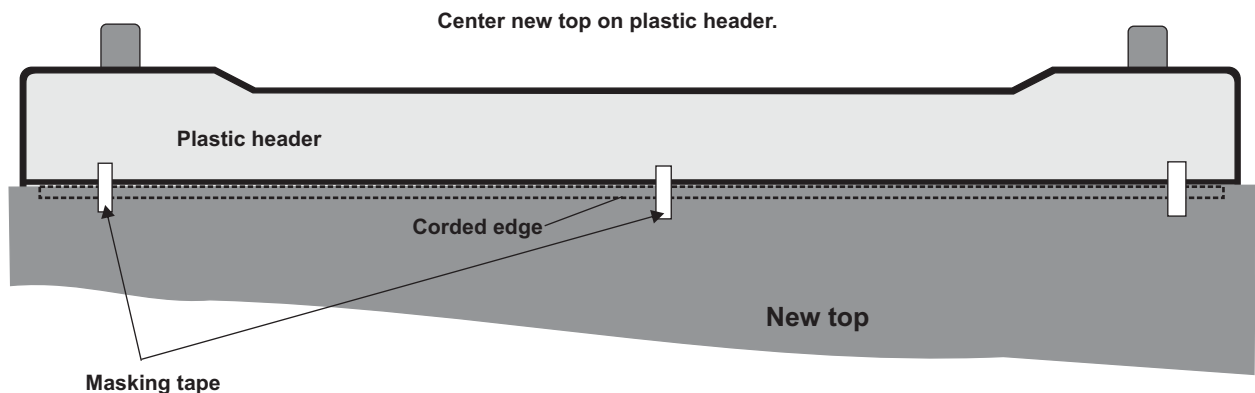
**CAUTION: Be careful when laying fabric on the hood of the vehicle. Damage to the finish can be caused if the surface is dirty. Protect with a appropriate cloth as required.**



- 9) Remove fabric from header.

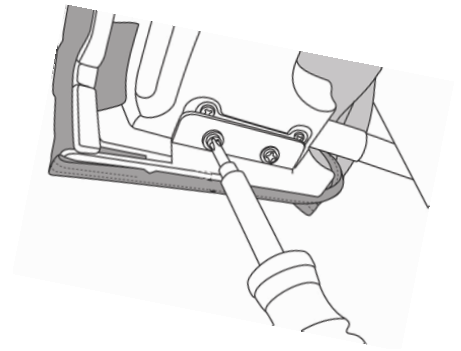
### **STEP 2 Install New Top**

- 1) With the header still in the locked position on the windshield, lay the new top out over the hood of the vehicle as the original top had been when removed.
- 2) Lay the front edge of the new top with the corded edge into the plastic channel. It is important to center the new top in the channel by checking the position on each side. Once centered, use masking tape to hold the top to the plastic header while re-installing the overlay and screws. See below.

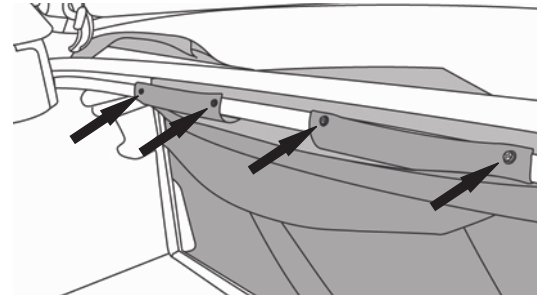


- 3) Now re-install the upper plastic portion of the header using the screws previously removed. It is easiest to start on the sides and work towards the middle. Be careful to check the position of the top in regards to centering during this process to be sure it stays in the middle.
- 4) Fold the fabric back over the header. Release the latches and lift the header up so as to allow installation of the header into the pockets in the front corners of the top. Carefully tuck the header into the pockets and pull the plastic top fastener in place over the holes.

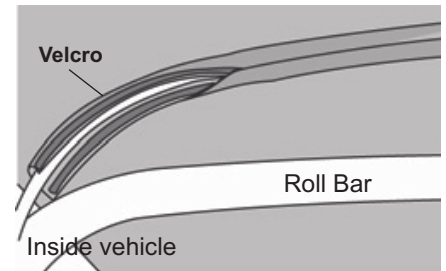
5) Re-install the screws removed earlier in the header. Repeat for other side.



6) Drape the top material over the bow assembly while it is in the up position to initially position the fabric in the approximate location it will be installed. Then fold the bow assembly and top down onto the rear of the vehicle. Position the fabric so the flaps that get screwed to the bow are in their correct positions. Install the 4 screws as shown.



7) Open the top assembly into its up position and latch the top back on the header. Inside the top the velcro bow wrap should be positioned to install on the middle bow by wrapping it around and fastening the velcro.



8) Now hook the rear corners of the top to the body.

**NOTE: the new top may be very tight at this step and needs to be warmed up to ensure installation will be easier. The top will stretch after a few days installed on the vehicle and will be much easier to install the next time.**

**NOTE: Installation of the windows into the top is the same process as factory.**

9) Wrap the plastic strip on the front of the quarter window around the plastic door surround and insert the plastic keeper in place.

10) Wrap the plastic keeper around the top of the front door surround and insert it into the channel.

11) Install the new rear side windows and the new rear window as the originals were installed.

## **Important Care Instructions:**

Convertible tops and accessories require special care if you want to get the maximum usage and enjoyment from them. The following recommendations, if followed carefully, can extend the life of your top or accessory.

Hand wash using a mild non-detergent soap such as ivory. Use a non-abrasive cloth or sponge. Rinse thoroughly.

Do not wash in direct sunlight and avoid automatic car washes

When your top is clean, we recommend using "Ragg Topp" or "303 Protectant" on both the vinyl top and windows. This product contains a sunscreen that helps protect from the sun's damaging rays. Stay away from products containing alcohol, as it will cause the fabric and windows to lose their elasticity, thus reducing the life of your top or accessory. If you are unable to locate "RaggTopp" Please call 1-800-377-4700 for a distributor near you. For "303 Protectant", please call 1-800-223-4303 for a distributor near you.

Direct sunlight and heat are the biggest enemies of the windows. Park in the shade whenever possible. If you must park in the sunlight, rotate the direction that you park every few days so all windows get even exposure.

Our tops are designed so that you may roll up and/or store the rear curtain and side curtains. To prevent scratching of the windows, be sure that windows are completely clean and free of dust particles. Even a little dirt will badly scratch the windows. You may want to use a soft cloth when rolling up or storing your windows. Heat may build up on rolled up windows, so be sure to unroll them frequently. If you roll up the windows at the beginning of summer and leave them, they may be ruined by fall.

Do not open or roll up windows at temperatures below 45 degrees F this could cause them to crack or break.

### **Zipper Care.**

DO NOT use pliers or other tools to pull on zippers. If the zipper requires more force than pulling with your fingers something is most likely out of alignment or improperly installed. Be sure the top is up to a temperature of 70 deg., and that the components are installed correctly and in the correct sequence to ensure protection of the zipper.

Zippers require periodic cleaning and lubrication to ensure longevity and ease of use. Clean by wiping with a towel soaked in soap and water, DO NOT USE HARSH CHEMICALS. Zipper lubricants are available at sporting goods stores and online for wetsuits. An occasional use will keep the zipper slides operating as new.

## **Warranty Information**

Rampage products, Inc. warrants to the original purchaser of any top it manufactures, that the top will be free of defects in material or workmanship for a period of 3 year from date of purchase. Such obligations under this warranty shall be limited to the repair or replacement, at Rampage products discretion, of any assembly or parts which, upon examination by Rampage products, Inc. proves to be defective. All defective items must be returned with proof of purchase to Rampage products, Inc., freight prepaid. This warranty does not cover damage resulting from abuse, misuse, alteration, accident or damage in transit. Rampage products obligations under this warranty are limited to the aforementioned repair or replacement of warranty defects for which the return authorization has been received during the warranty period, and Rampage products, Inc. shall not be liable for any incidental or consequential damages arising from breach of this or any implied warranty.

**Rampage Products, Corona, CA Phone: (951) 277-4949 Fax: (951) 277-2295**

**[www.rampageproducts.com](http://www.rampageproducts.com)**

*Made in China*